

**Flexibility**  
Connectivity



**Reliability**

# PSS 5000 Forecourt Controller

One controller for all solution types

## Benefits of one controller

- > Ease of maintenance
- > Ease of change
- > Speed of change
- > Ease of management

## Combine POS and forecourt equipment of any brand and make

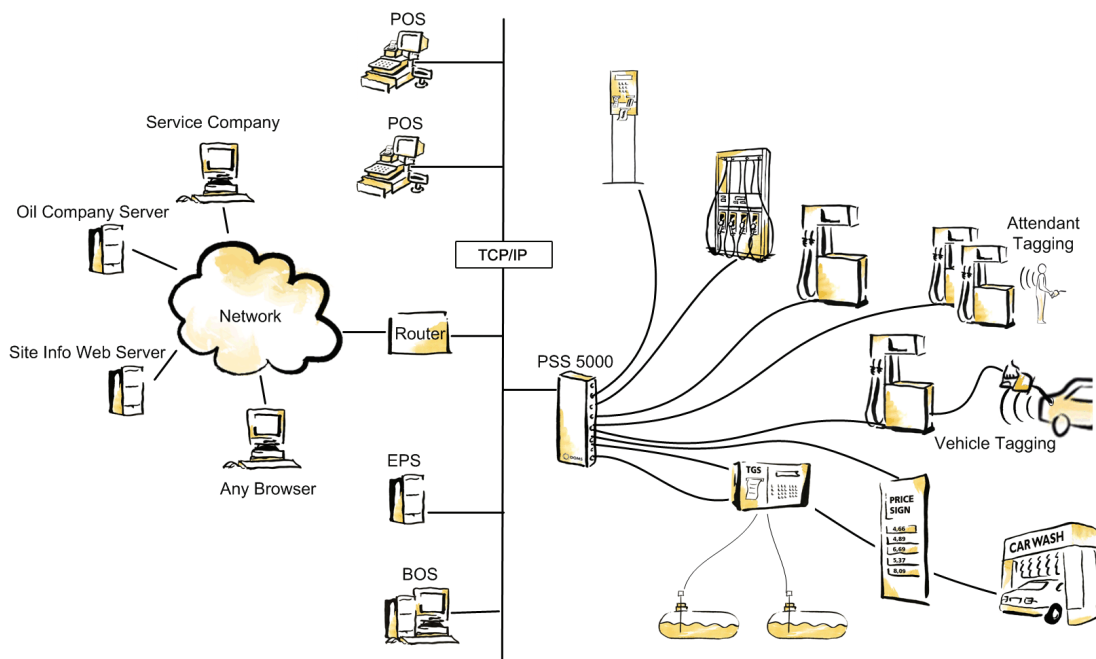
PSS 5000 is designed to provide oil companies with the flexibility to mix POS and forecourt equipment of any brand and make. This means that the oil company can combine any POS system with dispensers from, for example, Gilbarco, Wayne or Tokheim.

As a system component in the POS environment, the PSS 5000 overcomes the complex differences between a supermarket and a petrol station; integrating control of all types of forecourt equipment with the POS, BOS and head office systems.

## Connects to the rest of the world

PSS 5000 offers a broad range of connectivity features such as direct network access to detailed technical alarms, environmental data and inventory figures. PSS 5000 is the latest in the series of PSS controllers and builds on more than

25 years of experience. It is today used on more than 50,000 petrol stations in more than 60 countries.



PSS 5000 functions as a central controller with interfaces to all forecourt equipment and a TCP/IP link to the rest of the world.

## Interfaces to most forecourt equipment

PSS 5000 supports numerous types of forecourt equipment, including:

- > Pumps (more than 50 different pump types, including IFSF)
- > Payment terminals (cards and/or bank notes)
- > Tank gauge systems
- > Price poles
- > Car wash machines
- > Vehicle identification systems
- > Vapour recovery systems
- > Attendant Tagging
- > I/O alarm panels (such as oil separator alarms)
- > Fall-back switch (if the POS system is down)

## We take ownership of the business logic

PSS 5000 is more than a forecourt interface and a connection box. It also includes the software application, which handles the business logic for controlling the petrol station forecourt. This means that the POS draws entirely on the experience and knowledge of Doms and, therefore, only needs to do little work in this area.

### The main advantages are:

- > Easy POS integration of complex forecourt business logic.
- > Usage of a stable and well-proven forecourt application.
- > Flexibility for retailers to perform independent updates of both POS and forecourt equipment.

## Outdoor payment solutions

PSS 5000 integrates equipment and applications from different manufacturers for almost any type of solution, including:

- > Intelligent and unintelligent terminals
- > Keyboards and secure PIN entry devices
- > External or embedded payment servers
- > POS and head office interfaces

## Easy POS integration via TCP/IP

For implementation and test a PSS 5000 development package is available, including full documentation, a PSS 5000 system, simulators for pumps, tank gauge systems, payment terminals and price poles, diagnostic tools and Windows interface components. More than 60 POS suppliers have already interfaced to the PSS 5000.

## Matches all petrol stations, regardless of design and size

PSS 5000 is fully modular in terms of hardware and software. This enables e.g. a small system, handling one POS terminal and one type of pump to be upgraded to a complex system, capable of handling an unmanned site with a card server and pumps from different manufacturers, together with a price pole and a payment terminal.

## IFSF support

Since 1996, the PSS 5000 has implemented interfaces to the existing IFSF protocols for pumps, price poles and tank gauges.

## All in one box

Besides functioning as a forecourt controller, the PSS 5000 hardware also acts as an EMC and LVD approved connection box for the wiring of the forecourt. This means that all cables from POS, BOS and the forecourt can be connected in the controller box.

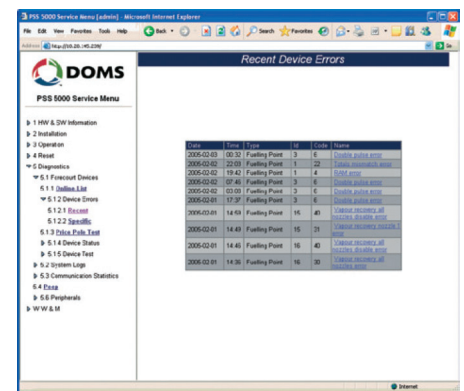
## Remote Service Facilities

Each controller contains an embedded web server. It is a cost and time reducing feature for maintenance and configuration, both on-site and remotely.

- > Ensures that technicians are only sent to the site when required.
- > Remote diagnostics can be conducted via the Internet and by professionals
- > Software uploads and downloads of both application and configuration. A feature of the web sever is the error and event log from all forecourt devices.



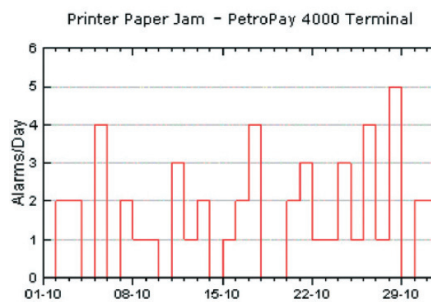
PSS 5000 unit opened (to the left) and closed (to the right). The CPU board and hardware interface modules are mounted inside the controller box, where POS and the forecourt equipment are connected.



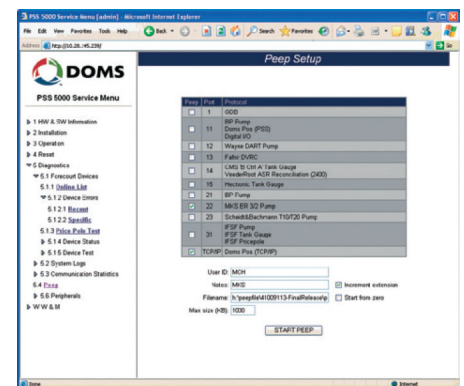
A feature of the web sever is the error and event log from all forecourt devices. A feature of the web server is the facility to log communication with all POS and forecourt devices connected. This is a very efficient tool for diagnostics and trouble-shooting.

## Optional host interface for data and alarm collection

The PSS 5000 is ideal as a data provider to host systems, such as alarm centres or delivery planning systems. It has an XML based interface and collects data and alarms from all the connected forecourt equipment.



Via the host interface all types of alarms can be collected from PSS 5000.



## Reliability at low cost

PSS 5000 is a proven high performance embedded system offering fast transaction handling and a low failure rate. Compared to a PC based system, a PSS 5000 ensures a stable system for continuous operation at low cost.

## Approvals and compliance

PSS 5000 has been designed to comply with the different W & M Approvals around the world. The W & M port is isolated in a special module. This means that the controller can be updated with new functionality without requiring new approval.

W & M approvals have already been issued in a large number of countries, and the first forecourt controller PSS 5000 was tested and deemed compliant with the OIML recommendations R-117.

CURRENT INVENTORY STATUS											
Tank	Product	Capacity	Volume	Ullage	Low	Low Low	Tank Status	24h Avg	Low Low in	Order Vol.	
1	Diesel	15.500	9.174	6.326	8.500	5.000		3.297	1,1 days	<input type="text" value="6.000"/>	
2	UNL95	11.451	10.549	902	2.500	1.600		609	14,8 days	<input type="text" value="0"/>	
3	UNL95	15.500	10.043	5.457	5.000	3.000		2.066	3,6 days	<input type="text" value="3.000"/>	
4	UNL92	7.602	3.799	3.803	2.000	1.400		375	6,4 days	<input type="text" value="3.000"/>	
5	Ultra 95	15.500	3.341	12.159	2.000	1.200		165	12,9 days	<input type="text" value="3.000"/>	
										<input type="button" value="Order"/>	<input type="text" value="15.000"/>

Via the host interface wet stock data can be collected in next to real-time from PSS 5000. This could be from a mixture of tank gauges.

**Doms ApS**  
 Formervangen 28  
 DK-2600 Glostrup, Denmark  
 Tel.: +45 4329 9400  
 Fax.: +45 4329 1012  
 Email: sales@doms.dk  
 www.doms.com

